

## TECHNICAL SHEET Lumigon

### Suspended luminaire

Flynn Talbot's work explores how light impact transforms the space.

Barrisol® develops solutions for human centric lighting. Lumigon® Lamp is the result of this exceptional collaboration.

This lamp is formed of four ovals of the same size. Positive and negative spaces within the ovals creates a dynamic form, where light is not only a source, but is integrated within the structure so it becomes a material.

This monumental lamp can be dimmable with a remote control according to your needs or desires.



#### Applications :

- Reception Halls
- Reception rooms
- Theaters
- Museums and Exhibition Areas ...



## TECHNICAL SHEET Lumigon

### Light properties

Source:	LED
Interchangeable:	Yes
Power consumed:	120 W
Color temperature:	3000K/4000K/6000K
Mac Adams :	<4
IRC	>80
Lifetime :	L70 35'000h

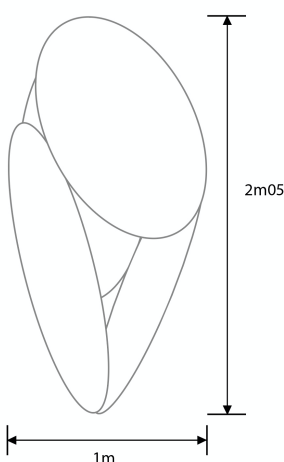
### Electrical properties

<u>Power:</u>	
--- Primary	230Vac/50Hz/60Hz
--- Secondary	24Vdc
Driver used:	Meanwell HLG 24V 150W
Converter lifetime:	50' 000h
Power factor:	0.95
Gradation:	Phase (Other in request 1---10V/DMX/DALI)
Management:	Variation of intensity with remote control
Power Rating:	II
Energy class:	A+

### Mechanical properties

<u>Materials:</u>	
--- Frame:	Aluminium Tube BMS345/50
--- Sheet:	Athéna 04030
<u>Dimensions:</u> 2050x1000 mm + driver 228x68x38.8mm	
Protection index:	IP20
Mounting Type:	Suspension of 3 m incl en 1 pt
<u>Weight:</u>	
--- Sheet:	1kg
--- Structure:	14.3kg
--- Luminaire (LED):	1.2kg
---Suspend:	0.5kg

### Product Dimensions



Designation	Color temperature	Version	Reference
Lumigon	White cold 6000K	With remote control	
Lumigon	Neutral white 4000K	With remote control	----
Lumigon	White hot 3000K	With remote control	

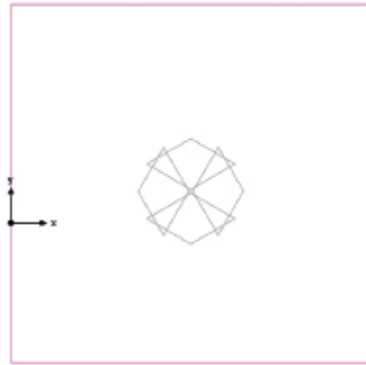
## TECHNICAL SHEET Lumigon

Barrisol Lumigon<sup>®</sup> Lamp

LUMIGON DIALux

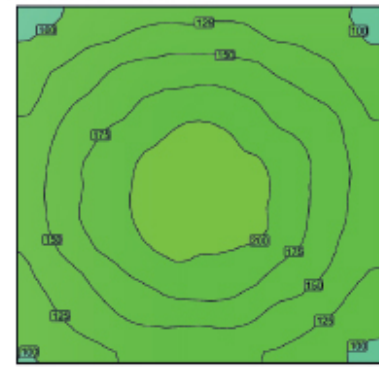
MODEL : 19860 mm  
COLOR : 6000°k  
HEIGHT : 3 m

Plan utile (Pièce 1) / Perpendicular illuminance (adaptive)



Average: 155 lx (Target:  $\geq$  500 lx),  
Min: 91.6 lx, Max: 221 lx,  
Min/average: 0.59, Min/max: 0.41

Isolines [lx] False colours [lx]



Scale: 1 : 50